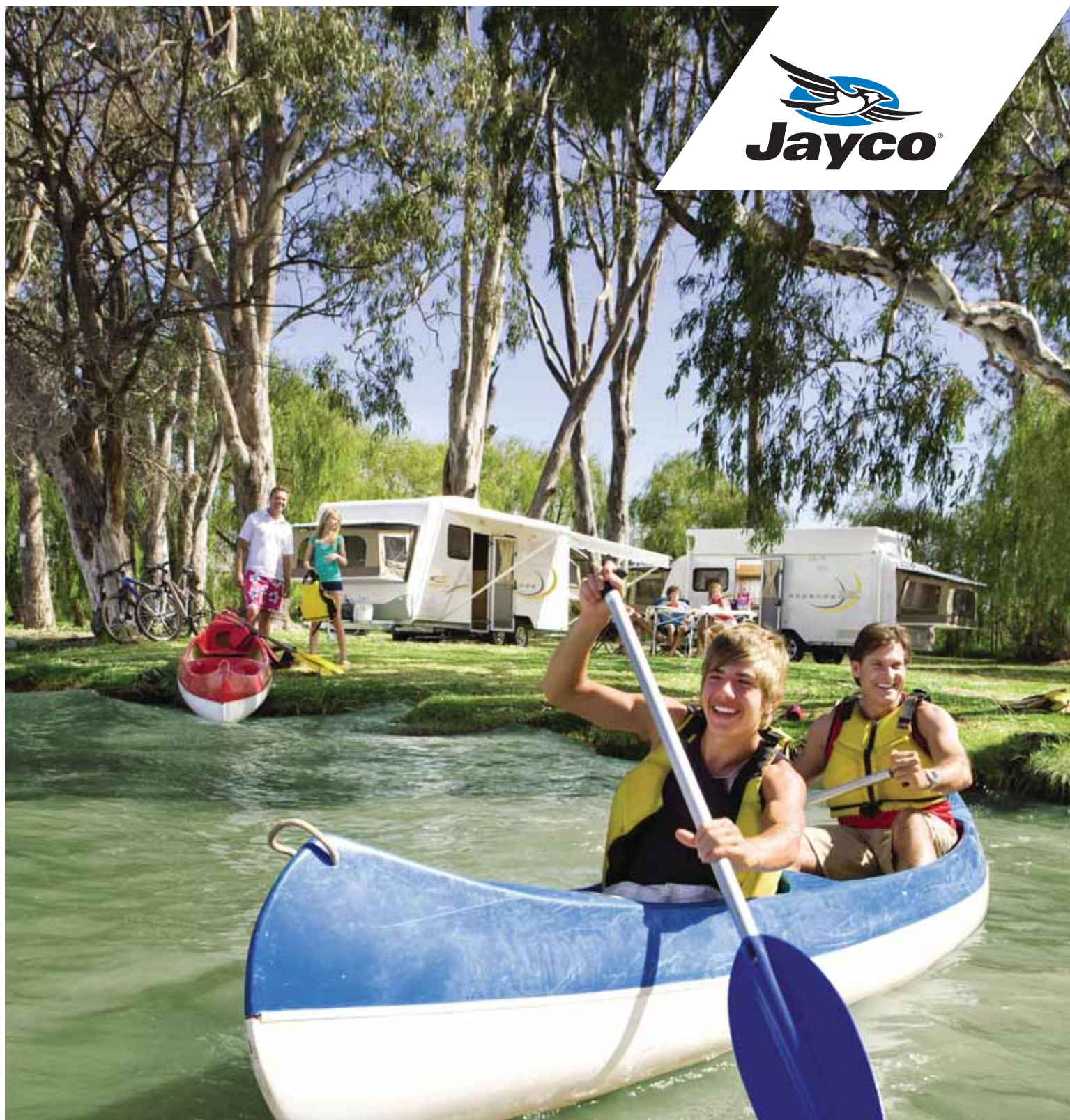


EXPANDA

CARAVANS & POPTOPS 2012

YOUR ROAD TO FREEDOM



EXPAND YOUR HORIZONS



Jayco's Expanda Caravans & Pop Tops give you the opportunity to think outside the square... go that extra mile so to speak.

Expanda's are now the RVs of choice for those seeking out a hybrid of Jayco's innovation: sure, everyone loves Camper Trailers because they're compact, great value and easy to tow, but families also enjoy how the Caravan or Pop-Top provides that welcome extra storage space.

To meet those needs, Jayco brings you the Expanda, which gives you the best of both worlds... so that you can explore the best the world has to offer.



EXPANDA - BILITY



Expanda Caravans & Pop Tops are the direct result of Jayco's continued drive for accessibility, flexibility, reliability and, now, expandability.

Like all Jayco RVs, the focus is on ease of use and simplicity.

To maximise the Expanda's features: simply lift up the hard lid and lower the bed (which is sealed tight with our Boltaflex weather-resistant tent material).

The evolution of Jayco's cutting-edge technology, Expanda Pop Tops & Caravans will help you expand your 'space'!

One of the positives for holidaying with an Expanda is that when you reach your destination, setting up Expanda is a simple 4 step process.



Step 1:
Unlock bed end clip



Step 2:
Raise bed end lid



Step 3:
Lower the bed end

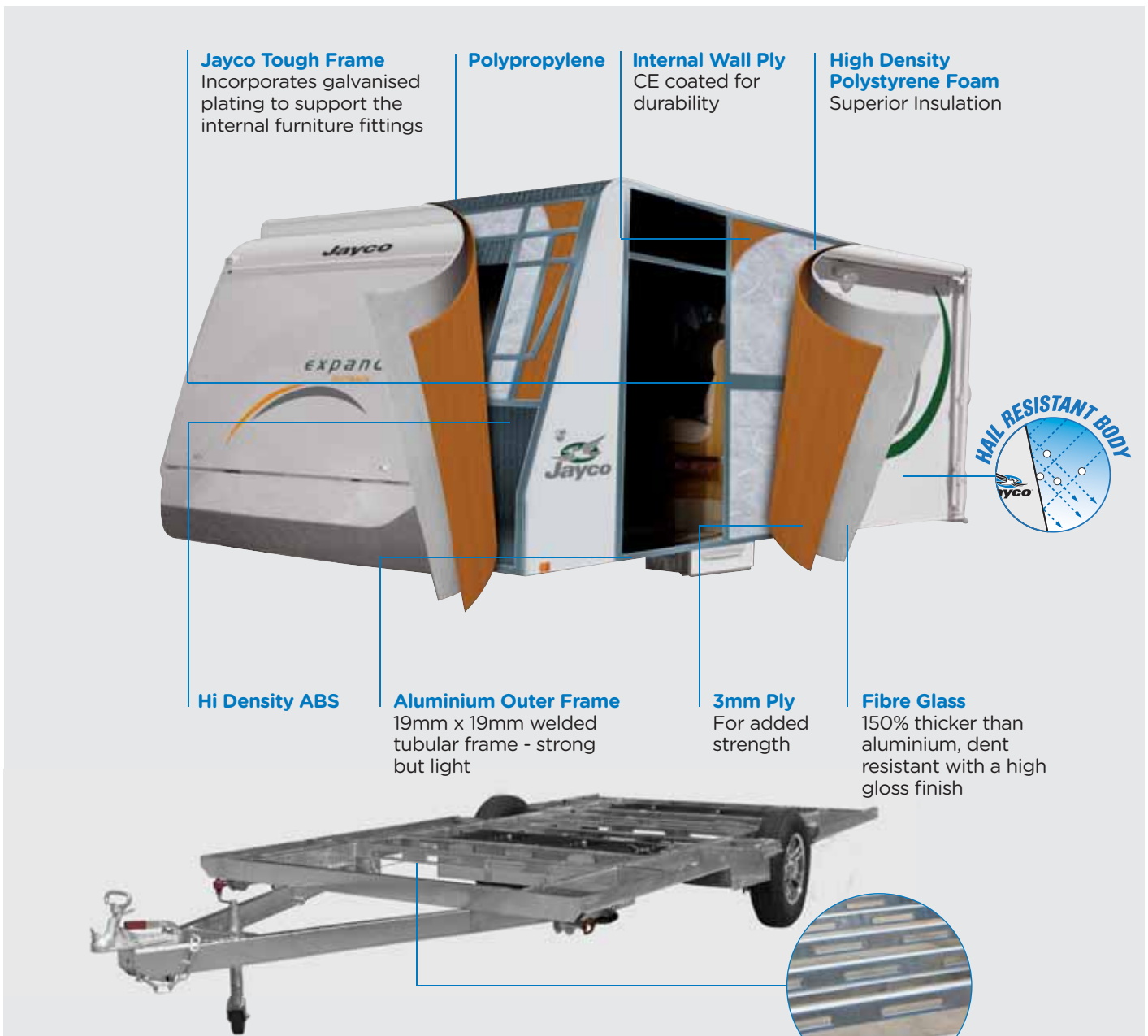


Step 4:
Insert Roof Bar

SUPERIOR STRENGTH

SUPERIOR DESIGN & CONSTRUCTION JAYCO TOUGH FRAME

Jayco's tough frame consists five major ingredients which - when vacuum bonded - makes it superior in strength and detail by comparison to the conventional 'stick & tin' aluminium clad caravans on the market.



Jayco Tough Frame
Incorporates galvanised plating to support the internal furniture fittings

Polypropylene

Internal Wall Ply
CE coated for durability

High Density Polystyrene Foam
Superior Insulation

Hi Density ABS

Aluminium Outer Frame
19mm x 19mm welded tubular frame - strong but light

3mm Ply
For added strength

Fibre Glass
150% thicker than aluminium, dent resistant with a high gloss finish



HAIL RESISTANT BODY

ENDURANCE CHASSIS

Independent testers describe it as the clever chassis...

- Superior strength and protection.
- PSC members, that support the floor, are superior to box section steel in terms of bending and compression.

- The design enables the chassis to be light but still achieve maximum strength.
- All chassis are galvanized for long life.
- Pressed holes offer protection for under floor wiring and plumbing.

EUROSTYLE FURNITURE

Exclusive timber furniture styling,
The latest in design.

01. Aluminium framing in all high-use areas such as the dinette, lounge and beds.
02. Positive cupboard catches to ensure your valuables travel securely.
03. New curved extrusion - adds strength and style
04. Lightweight cabinet fronts are securely screwed - not stapled - to provide additional strength.



THE ULTIMATE IN COMFORT AND STYLE

- All cushions use Enduro™ foam, Australia's most recognized high-resilience foam, providing years of comfort & support.
- Enduro™ foam is fire retardant.
- All Jayco upholstery features Ultra-Fresh antimicrobial protection, inhibiting growth of mould, mildew and fungi and low in dust mite allergen - assisting in the prevention of allergies, respiratory tract disorders and asthma.



Generic seating example shown

THE JAYCO EXPANDA FEATURES... WHAT THE OTHERS CALL OPTIONS!

INTERNAL FEATURES

- Aluminium LP corner extrusion & aluminium seat frames
- Dometic RM2350 3 way fridge in Pop Top (RM2553 in Caravan)
- SMEV 4 burner gas griller with one 240v element, 12v ignition & flame failure device
- 12v power system with built in "Trickle" charger
- Large Parents Bed (12' to 16' Models = 1470 mm Rear Bed) (17' & 18' Models = 1360 mm Front Bed)
- 12v lighting system including bed lights
- Flush fitting stainless steel sink with cover
- Microwave
- 12v rangehood
- Curtains to bed ends
- Designer Pelmets
- Positive cupboard catches
- Moulded Step Insert
- Zippered cushion covers (vinyl backed)
- Rubber backed curtains
- Overhead cupboard stays (where possible)
- Mains pressure tap to sink
- Pot drawers under griller
- Scrim curtains
- Coaxial TV point
- Innerspring mattress

EXTERNAL FEATURES

- Jayco Tough frame
- Solid fibreglass roof over bed ends
- Galvanised Endurance Chassis
- One piece jumbo boot liner
- LED external running lights
- Alloy wheels
- Concealed windout windows
- Bumper bar
- 2 corner Tri-lock Trimatic security door
- Sandwich domed seamless F/Glass roof (Pop Top only)
- Aluminium body & roof top frame
- Removable fly screen windows to pop top tent
- Grab handle & light at door
- 240v / Gas HWS on shower models
- 2x 82 litre water tanks on shower models
- 1 x 82 Litre water tank (non shower models)
- Lockable water filler
- 12v annexe light
- 240v external power point
- External mains pressure tap
- 2 x 9kg gas bottles to shower models
- 1 x 9kg gas bottle to non shower models

INTERNAL OPTIONS

- Air conditioning
- 18.5" LCD HD Sphere TV with built in DVD player
- CD AM/FM stereo with iPod Aux
- Auxiliary battery
- Bed converter for dinette
- Smev 4BO oven with 240v element, 12v ignition & flame failure device
- Washing Machine (Caravan only)

EXTERNAL OPTIONS

- Carefree roll out awning
- Add-a-room
- Solar pack
- Outback pack
- External slide out BBQ (Select models)
- External speakers x 2
- Privacy screens to bed ends
- ALKO drop jacks
- External shower
- Simplicity Independent Suspension

OUTBACK OPTIONS

- 16" wheels (Pop Top only)
- Shockproof swivel coupling
- 100 amp battery
- Simplicity Independent Suspension

JAYCO CARAVANS TYRES ARE FILLED WITH NITROGEN

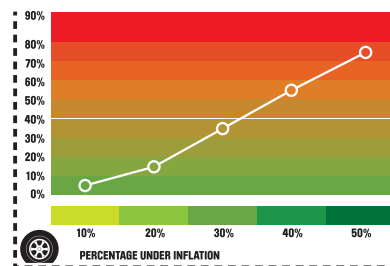


Jayco has implemented a state of the art Nitrogen-based pressurisation system for its entire range of RV's.

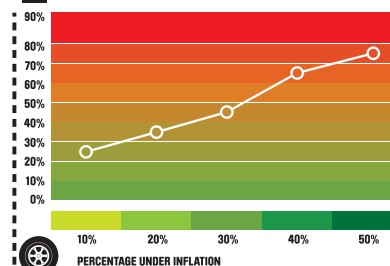
Nitrogen offers the following benefits over oxygen:

- Fuel savings of up to 3%
- 25% in reduction of tyre wear
- 27% reduction on tyre blowouts
- Eliminates interior wheel corrosion
- Improved handling and safety

TYRE WEAR INCREASE AS TYRE DEFLATES



FUEL USE INCREASE AS TYRE DEFLATES



OPTIONS FOR YOUR JAYCO EXPANDA

- 01. Carefree roll out awning
- 02. External fold out bbq (Select models)
- 03. Alko drop jacks
- 04. CD am/fm stereo with ipod aux
- 05. Bumper bar
- 06. Bike racks (18.57-6, 14.44-4 & 14.44-5 only)
- 07. RV control panel
- 08. Windup 12v TV antenna
- 09. Cabinet air conditioning (Pop Top only)
- 10. Roof mounted air conditioner
- 11. 2 x External speakers
- 12. External shower
- 13. External foldout table
- 14. Solar panels
- 15. Privacy Screen
- 16. 18.5" LCD HD Sphere TV with inbuilt DVD player



THE JAYCO OUTBACK RANGE...

***GET OFF THE
BEATEN TRACK***



OK, you're an explorer by nature... a spirit of adventure bigger than most.

With Jayco's Outback range you can now venture throughout Australia's vast network of unsealed roads, freeing you up to explore some of the nation's most incredible hideaways.

Jayco's Outback range has the added strength and clearance you'll need for rugged conditions, but there are limits!

Some bush tracks are barely suitable for a 4WD, let alone an Expanda!

One thing's for sure: when you reach your destination, you'll really appreciate the home comforts inside your Jayco Outback Expanda!

When you are driving 'off road' and in unfamiliar territory, always take precautions such as driving slower and with extra care... as the most experienced 4-wheel drivers say: "it's best to use your Expanda as a base station and head into rougher terrain without anything under tow".

OUTBACK RANGE FEATURES

- ALKO specialised outback leaf springs
- Shock absorbers with guards (single axle only)
- Underslung axle (tandem axle only)
- Straight Axle (16" and below)
- External 12v auxiliary plug
- Double step
- 15" alloy wheels with 235/75R15 tyres
- 150mm x 50mm RHS main chassis members
- 125mm x 50mm RHS "A" frame
- ALKO outback drop jacks
- ALKO off-road electric brake magnets
- Protective aluminium checker plate finish on sides
- Jayco mud flaps
- White Powder coated Bumper Bar (Pop Tops only)
(Galvanised on OB Caravans)



SPECIFICATIONS & FLOORPLANS

MODEL	Body Length	Interior Length	Travel Length	Travel Height*	Interior Height	Width inc Awning	Towball weight** (approx)	Tare weight (approx)	Extended Length
14.44-4	4550mm 14'11"	3735mm 12'3"	6018mm 19'9"	2255mm 7'5"	2115mm 6'11"	2470mm 8'1"	130kg	1363kg	6018mm 19'9"
14.44-4 OB	4550mm 14'11"	3735mm 12'3"	6018mm 19'9"	2400mm 7'10"	2115mm 6'11"	2470mm 8'1"	147kg	1490kg	6018mm 19'9"
14.44-5	4550mm 14'11"	3735mm 12'3"	6018mm 19'9"	2380mm 7'10"*	2115mm 6'11"	2470mm 8'1"	130kg	1443kg	6018mm 19'9"
14.44-5 OB	4550mm 14'11"	3735mm 12'3"	6018mm 19'9"	2525mm 8'4"*	2115mm 6'11"	2470mm 8'1"	141kg	1550kg	6018mm 19'9"
16.49-1	5091mm 16'8"	4766mm 15'8"	6392mm 20'11"	2255mm 7'5"	2115mm 6'11"	2470mm 8'1"	145kg	1455kg	7259mm 23'10"
16.49-1 OB	5091mm 16'8"	4766mm 15'8"	6392mm 20'11"	2400mm 7'10"	2115mm 6'11"	2470mm 8'1"	162kg	1561kg	7259mm 23'10"
16.49-3	5091mm 16'8"	4766mm 15'8"	6392mm 20'11"	2380mm 7'10"*	2115mm 6'11"	2470mm 8'1"	141kg	1525kg	7259mm 23'10"
16.49-3 OB	5091mm 16'8"	4766mm 15'8"	6392mm 20'11"	2525mm 8'4"*	2115mm 6'11"	2470mm 8'1"	162kg	1610kg	7259mm 23'10"
16.49-4	5091mm 16'8"	4766mm 15'8"	6392mm 20'11"	2255mm 7'5"	2115mm 6'11"	2470mm 8'1"	155kg	1465kg	7259mm 23'10"
16.49-4 OB	5091mm 16'8"	4766mm 15'8"	6392mm 20'11"	2400mm 7'10"	2115mm 6'11"	2470mm 8'1"	160kg	1560kg	7259mm 23'10"
17.56-1	5566mm 18'3"	5220mm 17'1"	6864mm 22'6"	2205mm 7'2"	2115mm 6'11"	2470mm 8'1"	154kg	1687kg	7734mm 25'4"
17.56-1 OB	5566mm 18'3"	5220mm 17'1"	6864mm 22'6"	2405mm 7'10"	2115mm 6'11"	2470mm 8'1"	180kg	1772kg	7734mm 25'4"
17.56-2	5566mm 18'3"	5220mm 17'1"	6864mm 22'6"	2330mm 7'8"*	2115mm 6'11"	2470mm 8'1"	164kg	1747kg	7734mm 25'4"
17.56-2 OB	5566mm 18'3"	5220mm 17'1"	6864mm 22'6"	2525mm 8'4"*	2115mm 6'11"	2470mm 8'1"	177kg	1853kg	7734mm 25'4"
18.57-5	5942mm 19'6"	5546mm 18'2"	7355mm 24'1"	2895mm 9'5"	1978mm 6'5"	2470mm 8'1"	135kg	2040kg	8235mm
18.57-5 OB	5942mm 19'6"	5546mm 18'2"	7355mm 24'1"	3010mm 10'0"	1978mm 6'5"	2470mm 8'1"	152kg	2140kg	8235mm
18.57-6	5722mm 18'9"	5341mm 17'6"	7240mm 23'9"	2895mm 9'5"	1978mm 6'5"	2470mm 8'1"	149kg	1910kg	7245mm
18.57-6 OB	5722mm 18'9"	5341mm 17'6"	7355mm 24'1"	3010mm 10'0"	1978mm 6'5"	2470mm 8'1"	165kg	2030kg	7245mm
18.57-9	5942mm 19'6"	5546mm 18'2"	7355mm 24'1"	2895mm 9'5"	1978mm 6'5"	2470mm 8'1"	145kg	1995kg	8235mm
18.57-9 OB	5942mm 19'6"	5546mm 18'2"	7355mm 24'1"	3010mm 10'0"	1978mm 6'5"	2470mm 8'1"	152kg	2160kg	8235mm

* Travel height includes Roof hatch.
 Outback travel heights increase by 200mm (Pop Top)
 205mm (Caravan) over the touring model.
 Travel height includes TV antenna and Roof hatch.
 Travel height includes TV antenna.

** The towball weight is only a guide and will change depending on accessories that are fitted to your van.
 It is advisable to discuss this with your Jayco Representative.

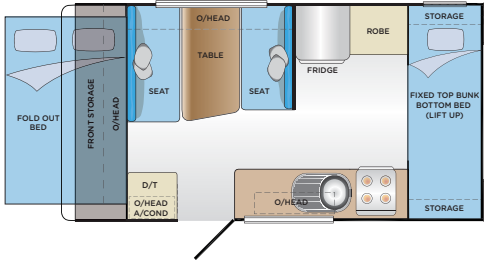
*** Models 1857-6 - 1857-9 Include Coleman Low Profile Air Conditioner

Jayco allow an amount of additional weight (Carrying Load) for each individual unit manufactured above the initial manufactured Tare Weight of the unit. This "Carrying Load" is for the customers individual weight requirements and can be made up of "any" additional weight they propose to load the unit up of. ie water, food, clothes etc.

The standard unit carrying loads Jayco apply are;

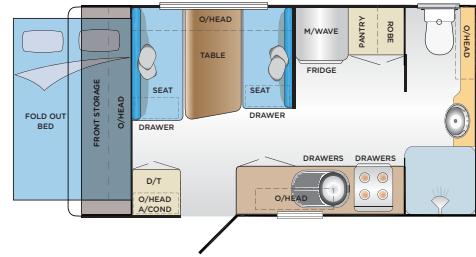
Single Axle, non internal shower units	300kg
Single Axle, internal shower units	375kg
Tandem Axle, non internal shower units	400kg
Tandem Axle, internal shower units	475kg

14.44-4 POP TOP



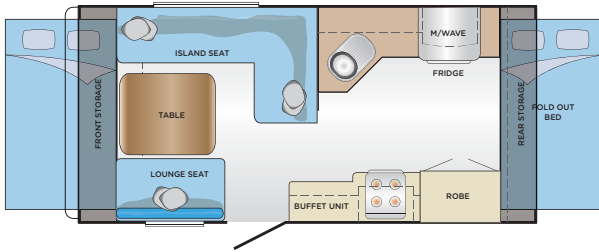
Tare weight: 1363kg
Tow ball: 130kg

14.44-5 POP TOP



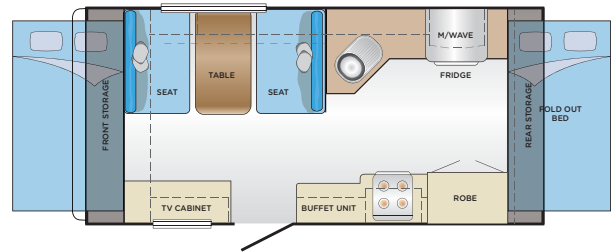
Tare weight: 1443kg
Tow ball: 130kg

16.49-1 POP TOP



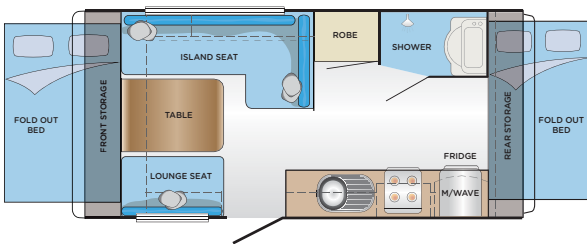
Tare weight: 1455kg
Tow ball: 145kg

16.49-1B POP TOP Cafe dinette model



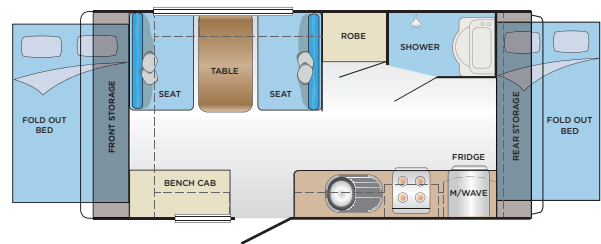
Tare weight: 1445kg
Tow ball: 145kg

16.49-3 POP TOP



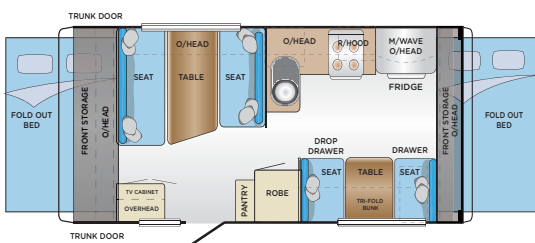
Tare weight: 1540kg
Tow ball: 150kg

16.49-3 B POP TOP Cafe dinette model



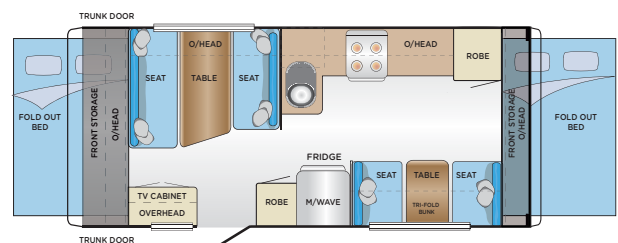
Tare weight: 1525kg
Tow ball: 141kg

16.49-4 POP TOP



Tare weight: 1465kg
Tow ball: 155kg

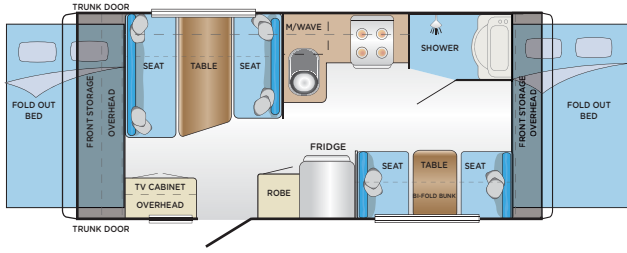
17.56-1 POP TOP



Tare weight: 1637kg
Tow ball: 154kg

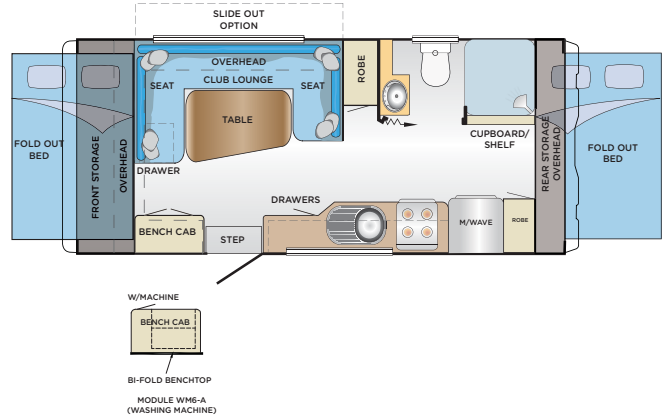
SPECIFICATIONS & FLOORPLANS CONT.

17.56-2 POP TOP



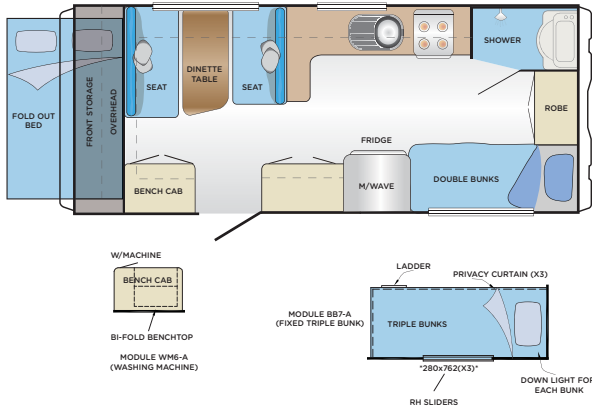
Tare weight: 1747kg
Tow ball: 164kg

18.57-5 CARAVAN



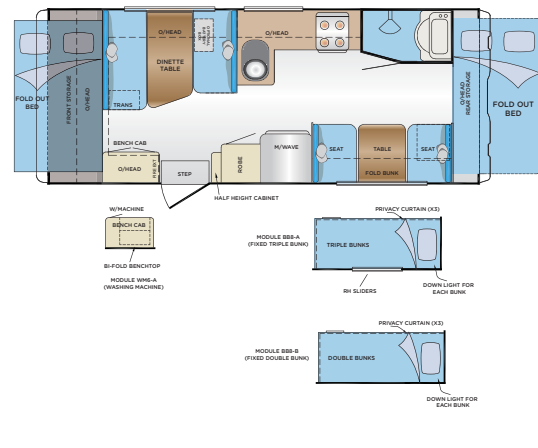
Tare weight: 2030kg
Tow ball: 135kg

18.57-6 CARAVAN



Tare weight: 1890kg
Tow ball: 149kg

18.57-9 CARAVAN



Tare weight: 2030kg
Tow ball: 135kg

PEACE OF MIND WITH JAYCO

We understand that purchasing a Recreational Vehicle is a significant investment so it is important that you make the right decision with a brand that you can trust.

Here are 5 main reasons why Jayco should be your RV of choice:

01. Jayco Warranty Program:

Australia's most respected Warranty offers you 1 year protection on your new Jayco. We take pride in what we build and want to offer you peace of mind that you are covered by Australasia's largest dealer and service network stocking an extensive range of parts to ensure that you can focus on the job at hand... having fun.

02. Jayco Roadside Assist**:

3 Years protection offering 24 Hour assistance in times of need. Jayco is the only RV Manufacturer to offer you complimentary Roadside Assist on your new Jayco for 3 years. This program is tailored specifically to offer you roadside support for your new Jayco. This support is there for you 24 hours a day 365 days a year. When you are enjoying the freedom of touring, you can be reassured that Jayco is only a phone call away to support you in an emergency on the road.

03. Dealer and Service Network:

Our Dealer and Service Network is the most comprehensive in Australia. We also carry parts in stock to ensure that we can service you.

04. Value for Money:

We are the most efficient manufacturer in Australia and combined with our significant buying power means that you get more features for less.

05. Resale Value:

It is inevitable that you will sell or trade in your RV when you are looking to upgrade. Jayco products hold their value better than any other RV Brand. It is important to think about this when working out your costings on your new RV purchase.



THE TRUE VALUE OF OWNERSHIP

With Jayco, as mentioned, you get more amenities, more liveable, home-like features and superior construction for better durability and greater resale value. Simply put, you won't find another RV packed with more **true value** — from the time of purchase to the time you sell.

- + 1-year warranty
- + 3-Year Roadside Assist*
- + Dealer & Service Network (95 Service Agents)
- + Value for Money
- + Better resale value

= True Value of Jayco Ownership

*Not available in New Zealand

COMMUNITY PASSION & SUPPORT



Ever mindful of its role in the wider community, Jayco is an active supporter of a myriad of charitable groups and organizations and are one of the most passionate supporters of Australian sport.

Jayco is involved in many programs, with the aim of giving young athletes the support required for them to excel on the world stage and importantly supporting a number of teams in their quest for Gold at the 2012 Olympics such as the Australian Opals Womens Basketball Team and the Australian Mens & Womens Road and Track Cycling teams.

Jayco is also a long time sponsor of the Jayco Dandenong Rangers, a thirteen year partnership.

Jayco also proudly supports the Jayco Tamworth Music Festival, the Jayco Country Music Awards and the Jayco Country Theatre.



IN GOOD COMPANY



JAYCO STORY

Over the past 37 years, Jayco has built a solid reputation as Australia's favourite recreational vehicle brand.

But even more importantly, our extensive range of recreational vehicles has again been fine tuned as we at Jayco continue pushing the envelope to ensure customer satisfaction and comfort.

And, while our commitment to innovation ensures that Jayco remains the recreational vehicle of choice for pleasure seekers throughout Australia and New Zealand, our mission hasn't altered since day one.

Jayco will continue to invest in manufacturing capabilities and equipment and increase resources in research and development.

All Jayco RV's fully comply with the associations code of manufacturing.



What's more, Jayco offers Australasia's largest range of models, layouts and features, while our manufacturing efficiencies allow us to offer you more for less (our RV's also have higher resale value than any other brand ... all the better for when you upgrade to your next Jayco!) And importantly, the buck doesn't stop when you leave the shop.

Jayco now employ over 800 people from the South East Melbourne Region, the Jayco family are hard working people, passionate about building great products for you to enjoy.

From all of us at Jayco, the message is pre-eminent.

***Sound business... Quality product...
Value for money... Peace of mind***



**Your nearest authorised
Jayco sales dealer:**

**WWW.JAYCO.COM.AU
1300 JAYCO RV (1300 52926 78)**

Jayco Corporation owns the copyright in this Brochure. Unauthorised use, reproduction or adaption is forbidden and will be prosecuted. Due to ongoing improvement, the specifications in this brochure are subject to change without notice.

©JAYCO 2011 P.O. Box 636 Dandenong VIC Australia 3175