

# TOY HAULERS

## 2012

**YOUR ROAD TO FREEDOM**



# ***BUILT FOR BOYS WHO LOVE THEIR TOYS***



**Toy Haulers are a relatively new concept in Australasia and Jayco have been the market leader since introducing the Base Station over five years ago.**

Jayco Toy Haulers give you the best of both worlds, the living area up the front features the trademark comforts that come with all Jayco RV's while the "garage" area comprising of the entire rear of the vehicle can store all of your equipment vital to expanding your holiday experience.

Take your dirt bikes, mountain bikes, go karts, surfboards, jet skis.....the possibilities are endless.

Jayco Toy Haulers are available in two models, the Base Station with the separate garage and the fold down ramp and the smaller Work N'Play with the lift up lid and smaller to tow.



# ***THE RV THAT KEEPS PACE WITH YOUR IMAGINATION***



Base Station shown

The Jayco Toy Hauler series are available in 4 different layouts, and for the real adventure seeker there is also an "Outback Pack" option.

The 22' Basestation sleeps up to 8 people while the more compact. Work N Play has two different internal layouts sleeping up to 6.\*

Both Toy Hauler Ranges have 5 colour graphic options to choose from.

## WORK N PLAY



## BASE STATION



\*When fitted with optional beds

# SUPERIOR STRENGTH

## SUPERIOR DESIGN & CONSTRUCTION JAYCO TOUGH FRAME

Jayco's tough frame consists five major ingredients which - when vacuum bonded - makes it superior in strength and detail by comparison to the conventional 'stick & tin' aluminium clad caravans on the market.

### Jayco Tough Frame

Incorporates galvanised plating to support the internal furniture fittings

### Internal Wall Ply

CE coated for durability

### High Density Polystyrene Foam

Superior Insulation



### Aluminium Outer Frame

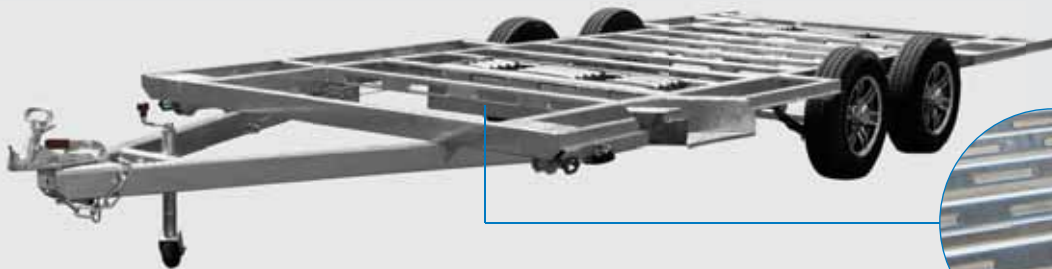
19mm x 19mm welded tubular frame - strong but light

### 3mm Ply

For added strength

### Fibre Glass

150% thicker than aluminium, dent resistant with a high gloss finish



## ENDURANCE CHASSIS

Independent testers describe it as the clever chassis...

- Superior strength and protection.
- PSC members, that support the floor, are superior to box section steel in terms of bending and compression.

- The design enables the chassis to be light but still achieve maximum strength.
- All chassis are galvanized for long life.
- Pressed holes offer protection for under floor wiring and plumbing.

## EUROSTYLE FURNITURE

Exclusive timber furniture styling,  
The latest in design.

01. Aluminium framing in all high-use areas such as the dinette, lounge and beds.
02. Lightweight cabinet fronts are securely screwed - not stapled - to provide additional strength. Positive cupboard catches to ensure your valuables travel securely.
03. New curved corner extrusion - adds strength and style.



## THE ULTIMATE IN COMFORT AND STYLE

- All cushions use Enduro™ foam, Australia's most recognized high-resilience foam, providing years of comfort & support.
- Enduro™ foam is fire retardant.
- All Jayco upholstery features Ultra-Fresh antimicrobial protection, inhibiting growth of mould, mildew and fungi and low in dust mite allergen - assisting in the prevention of allergies, respiratory tract disorders and asthma.



Generic seating example shown

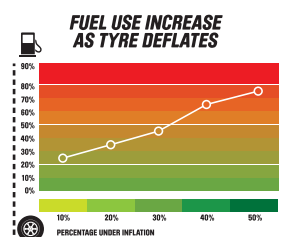
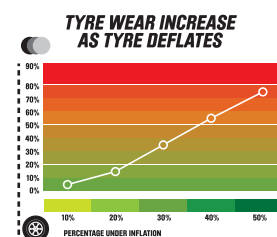
## JAYCO CARAVANS TYRES ARE FILLED WITH NITROGEN



Jayco has implemented a state of the art Nitrogen-based pressurisation system for its entire range of RV's.

Nitrogen offers the following benefits over oxygen:

- Fuel savings of up to 3%
- 25% in reduction of tyre wear
- 27% reduction on tyre blowouts
- Eliminates interior wheel corrosion
- Improved handling and safety



# THE JAYCO TOY HAULER FEATURES... WHAT THE OTHERS CALL OPTIONS!

## INTERNAL FEATURES

- Mechanics Rack (Basestation only)
- Fold Down Bunk Bed in garage area (Basestation only)
- Microwave
- 12v rangehood
- Dometic RM2553 (Basestation)
- Dometic RM7401 (Work 'n Play)
- Spinflo 3 Burner
- Flush fitting stainless steel sink with cover
- Privacy curtains to bed end
- Eurostyle furniture
- Built in battery "Trickle" charger
- Positive cupboard catches
- Zippered cushion covers (vinyl backed)
- Rubber backed curtains
- Overhead cupboard stays (where possible)
- Mains pressure tap to sink
- 12v lighting system including bed lights
- Bed end light with fan
- Shower module and Thetford toilet in 17.51-2 + 21.66-6
- Drop down privacy curtain (basestation only)
- Robe in garage (BaseStation only)

## EXTERNAL FEATURES

- Concealed windout windows
- Tri-lock Trimatic security door
- Grab handle and light at door
- 240V gas electric HWS (shower model only)
- 12v annexe light
- 240v external power point
- External mains pressure tap
- 2x 82 litre water tanks (shower model only)
- 1x 82 litre water tank (non shower only)
- Dual lockable water filler (shower model only)
- Hot dipped galvanised "endurance Chassis"
- Electric brakes
- Spare wheel jack
- Rocker leaf springs
- Leaf spring suspension with solid beam axle
- Durable moulded wheel boxes
- ALKO corner stays
- ALKO jockey wheel
- 2 x 9kg gas bottles (shower model only)
- 1 x 9kg Gas Bottle (non shower model)



## OPTIONS FOR YOUR JAYCO TOY HAULER

- 01. 18.5" or 21.5" LCD HD Sphere TV with inbuilt DVD player
- 02. SMEV 4 burner gas griller with one 240v element, 12v ignition and flame failure device (Basestation)
- 03. External foldout table
- 04. Slide out BBQ (BaseStation only)
- 05. Coleman air conditioner

- 06. Solar panels
- 07. External Speakers
- 08. CD am/fm stereo with ipod aux
  - 2 single beds (no bunks)
  - Second set of fold down bunks in garage area (Basestation)
  - Air conditioning
  - Gas 4BO oven, with 240V element (N/A in WNP)
  - Solar pack
  - Outback pack
  - ALKO drop jacks

- 100 Amp Auxiliary battery
- Bed converter for dinette (base station only)
- Wind up TV antenna
- Bed End privacy screen
- Drop down privacy curtain (Work n' Play only)
- Bunk Bed (WNP)



# SPECIFICATIONS & FLOORPLANS

Whether it's just you, the whole family or a few extra friends... relax. There's a layout that's just perfect for you.

MODEL	Body Length	Interior Length	Travel Length	Travel Height	Interior Height	Width inc Awning	Towball weight (approx)	Tare weight (approx)
<b>14.44-1</b>	4436mm 14'6"	4280mm 14'0"	5966mm 19'6"	2845mm 9' 4"	1978mm 6' 5"	2470mm 8' 1"	200kg	1490kg
<b>14.44-1 OB</b>	4436mm 14'6"	4280mm 14'0"	5966mm 19'6"	3050mm 10' 0"	1978mm / 6' 5"	2470mm 8' 1"	200kg	1500kg
<b>17.51-2HL</b>	5200mm 17' 1"	4913mm 16' 1"	6570mm 21' 7"	2895mm 9' 5"	1978mm 6' 5"	2470mm 8' 1"	148kg	1860kg
<b>17.51-2HL OB</b>	5200mm 17' 1"	4913mm 16' 1"	6570mm 21' 7"	3010mm 10' 0"	1978mm 6' 5"	2470mm 8' 1"	185kg	1930kg
<b>17.51-3</b>	5200mm 17' 1"	4913mm 16' 1"	6570mm 21' 7"	2895mm 9' 5"	1978mm 6' 5"	2470mm 8' 1"	155kg	1800kg
<b>17.51-3HL OB</b>	5200mm 17' 1"	4913mm 16' 1"	6570mm 21' 7"	3010mm 10' 0"	1978mm 6' 5"	2470mm 8' 1"	170kg	1870kg
<b>21.66-6</b>	6750mm 22' 1"	6470mm 21' 3"	8383mm 27' 6"	2895mm 9' 5"	1978mm 6' 5"	2470mm 8' 1"	210kg	2200kg
<b>21.66-6 OB</b>	6750mm 22' 1"	6470mm 21' 3"	8383mm 27' 6"	3050mm 10' 0"	1978mm 6' 5"	2470mm 8' 1"	230kg	2320kg

\* Includes Coleman Low Profile Air Conditioner.  
Outback travel heights increase by 205mm (Work N' Play) 155mm Base Station over the touring model.

\*\* The towball weight is only a guide and will change depending on accessories that are fitted to your van. It is advisable to discuss this with your Jayco Representative.

Jayco allow an amount of additional weight (Carrying Load) for each individual unit manufactured above the initial manufactured Tare Weight of the unit. This "Carrying

Load" is for the customers individual weight requirements and can be made up of "any" additional weight they propose to load the unit up of, ie water, food, clothes etc.

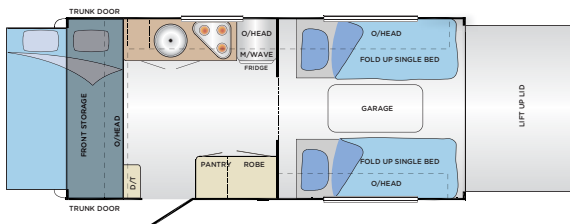
The standard unit carrying loads Jayco apply are;

Single Axle, non internal shower units 300kg  
Single Axle, internal shower units 375kg  
Tandem Axle, non internal shower units 400kg  
Tandem Axle, internal shower units 475kg  
14' WNP weights estimated at time of printing

## WORK'N PLAY 14.44-1



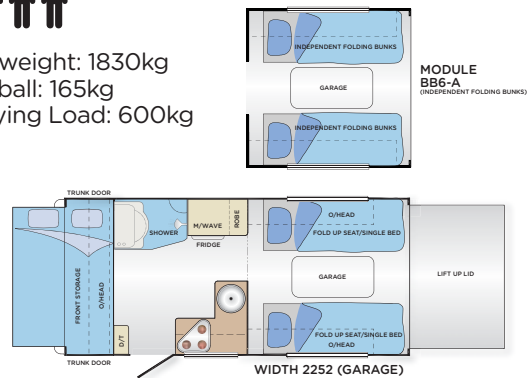
Tare weight: 1430kg  
Tow ball: 165kg  
Carrying Load: 600kg



## WORK'N PLAY 17.51-2



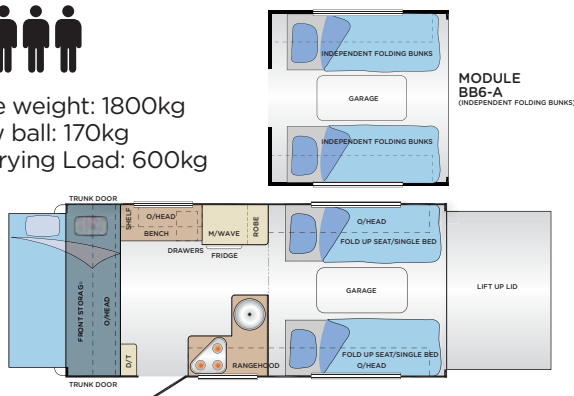
Tare weight: 1830kg  
Tow ball: 165kg  
Carrying Load: 600kg



## WORK'N PLAY 17.51-3



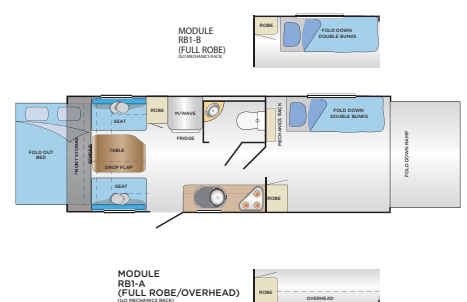
Tare weight: 1800kg  
Tow ball: 170kg  
Carrying Load: 600kg



## BASESTATION 21.66-6



Tare weight: 2200kg  
Tow ball: 210kg  
Carrying Load: 650kg



# PEACE OF MIND WITH JAYCO

We understand that purchasing a Recreational Vehicle is a significant investment so it is important that you make the right decision with a brand that you can trust.

Here are 5 main reasons why Jayco should be your RV of choice:

## 01. Jayco Warranty Program:

Australia's most respected Warranty offers you 1 year protection on your new Jayco. We take pride in what we build and want to offer you peace of mind that you are covered by Australasia's largest dealer and service network stocking an extensive range of parts to ensure that you can focus on the job at hand... having fun.

## 02. Jayco Roadside Assist\*\*:

3 Years protection offering 24 Hour assistance in times of need. Jayco is the only RV Manufacturer to offer you complimentary Roadside Assist on your new Jayco for 3 years. This program is tailored specifically to offer you roadside support for your new Jayco. This support is there for you 24 hours a day 365 days a year. When you are enjoying the freedom of touring, you can be reassured that Jayco is only a phone call away to support you in an emergency on the road.

## 03. Dealer and Service Network:

Our Dealer and Service Network is the most comprehensive in Australia. We also carry parts in stock to ensure that we can service you.

## 04. Value for Money:

We are the most efficient manufacturer in Australia and combined with our significant buying power means that you get more features for less.

## 05. Resale Value:

It is inevitable that you will sell or trade in your RV when you are looking to upgrade. Jayco products hold their value better than any other RV Brand. It is important to think about this when working out your costings on your new RV purchase.



## THE TRUE VALUE OF OWNERSHIP

With Jayco, as mentioned, you get more amenities, more liveable, home-like features and superior construction for better durability and greater resale value. Simply put, you won't find another RV packed with more **true value** — from the time of purchase to the time you sell.

- + 1-year warranty
- + 3-Year Roadside Assist\*
- + Dealer & Service Network (95 Service Agents)
- + Value for Money
- + Better resale value

= True Value of Jayco Ownership

\*Not available in New Zealand

## COMMUNITY PASSION & SUPPORT



Ever mindful of its role in the wider community, Jayco is an active supporter of a myriad of charitable groups and organizations and are one of the most passionate supporters of Australian sport.

Jayco is involved in many programs, with the aim of giving young athletes the support required for them to excel on the world stage and importantly supporting a number of teams in their quest for Gold at the 2012 Olympics such as the Australian Opals Womens Basketball Team and the Australian Mens & Womens Road and Track Cycling teams.

Jayco is also a long time sponsor of the Jayco Dandenong Rangers, a thirteen year partnership.

Jayco also proudly supports the Jayco Tamworth Music Festival, the Jayco Country Music Awards and the Jayco Country Theatre.



## IN GOOD COMPANY



# JAYCO STORY

**Over the past 37 years, Jayco has built a solid reputation as Australia's favourite recreational vehicle brand.**

But even more importantly, our extensive range of recreational vehicles has again been fine tuned as we at Jayco continue pushing the envelope to ensure customer satisfaction and comfort.

And, while our commitment to innovation ensures that Jayco remains the recreational vehicle of choice for pleasure seekers throughout Australia and New Zealand, our mission hasn't altered since day one.

Jayco will continue to invest in manufacturing capabilities and equipment and increase resources in research and development.

All Jayco RV's fully comply with the associations code of manufacturing.



What's more, Jayco offers Australasia's largest range of models, layouts and features, while our manufacturing efficiencies allow us to offer you more for less (our RV's also have higher resale value than any other brand ... all the better for when you upgrade to your next Jayco!) And importantly, the buck doesn't stop when you leave the shop.

Jayco now employ over 800 people from the South East Melbourne Region, the Jayco family are hard working people, passionate about building great products for you to enjoy.

From all of us at Jayco, the message is pre-eminent.

***Sound business... Quality product...  
Value for money... Peace of mind***



**Your nearest authorised  
Jayco sales dealer:**

**WWW.JAYCO.COM.AU  
1300 JAYCO RV (1300 52926 78)**

Jayco Corporation owns the copyright in this Brochure. Unauthorised use, reproduction or adaption is forbidden and will be prosecuted. Due to ongoing improvement, the specifications in this brochure are subject to change without notice.

©JAYCO 2011 P.O. Box 636 Dandenong VIC Australia 3175